

Track 'n Trade[®] Pro

Version 3.0

Accumulating Wealth One Tic at a Time![™]

Program Options

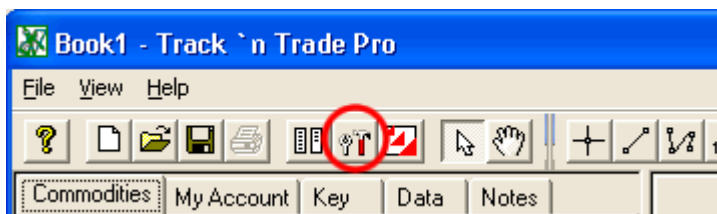
Program Options

Users can personalize Track 'n Trade Pro with the numerous preferences available in the Program Options Window.

To Open Program Options

There are two ways to open the Program Options Window:

- The first way is the Program Options icon on the Toolbar (see below).



- The second option is to click on the "View" Menu and select "Program Options".

Either of these two methods will open the Program options window containing 18 windows with custom features from ticks to indicators.

Style: Chart Tick Drawing Options

The first tab in Program Options titled Style, allows the user to define tick style, chart appearance, and speed of the play buttons. For more detail see the numbered sections in the following screenshot.

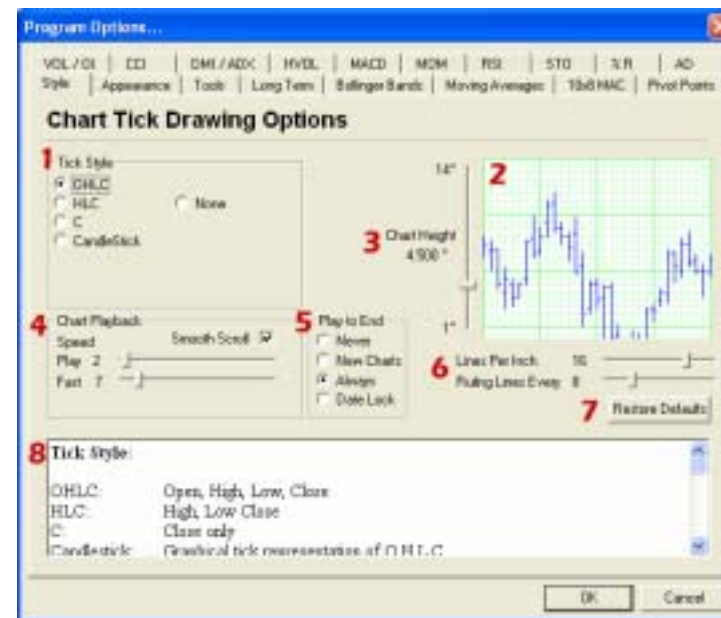


Chart 9: Style - Chart Tick Drawing Options

1. **Tick Style:** This option changes the style of tick that you would like displayed on the chart window.
 - a. OHLC - Open, High, Low, & Close.
 - b. HLC - High, Low, & Close.
 - c. C - Close Only.
 - d. CandleStick - Graphical Representation of Open, High, Low and Close Values.
 - e. None – Show no ticks on the chart window.
2. **Preview Window:** When changing properties in the Chart Tick Drawing Options, you may view the change in the Preview window before applying the changes to your chart.
3. **Chart Height:** This value controls the height of the tick that is drawn on the chart window. Height Range is between 1" and 14".

4. **Chart Playback:** The options in this section effect the Play buttons located to the right of your chart window.
 - Speed :**
 - a. Play: This is the rate at which the ticks are drawn when playing a chart.
 - b. Fast: This is the rate at which the ticks are drawn when fast forwarding a chart.
 - c. Smooth Scroll: Controls the chart and how it scrolls off of the chart window. Select and deselect and see which you prefer.
5. **Play to End:** This option controls how data is displayed on a contract.
 - a. Never: This play option restricts data play to manual only. To play charts, use the set of play buttons.
 - b. New charts: This option plays data to the end of a contract in a new chart book.
 - c. Always: This option plays data to the end of a contract in a new or saved chart book.
 - d. Date Lock: This play option is useful in paper trading historical contracts. When selected this option locks all contracts to one specific date.
6. **Lines Per Inch:** This number represents how many vertical lines are drawn per inch in the chart window.
 - Ruling Lines Every:** This number represents the number of lines between each major marker on the graph.
7. To set the options back to factory defaults, click on the **Restore Defaults** button on the bottom of the Properties screen.
8. Notice the **documentation** section at the end of the page. This section includes instruction for each option page.

Appearance: Chart Appearance

Next, is the Appearance tab, this section allows the user to change tick color options, ruler paper options, background changes and much more. View the detailed items after the screenshot for more information.

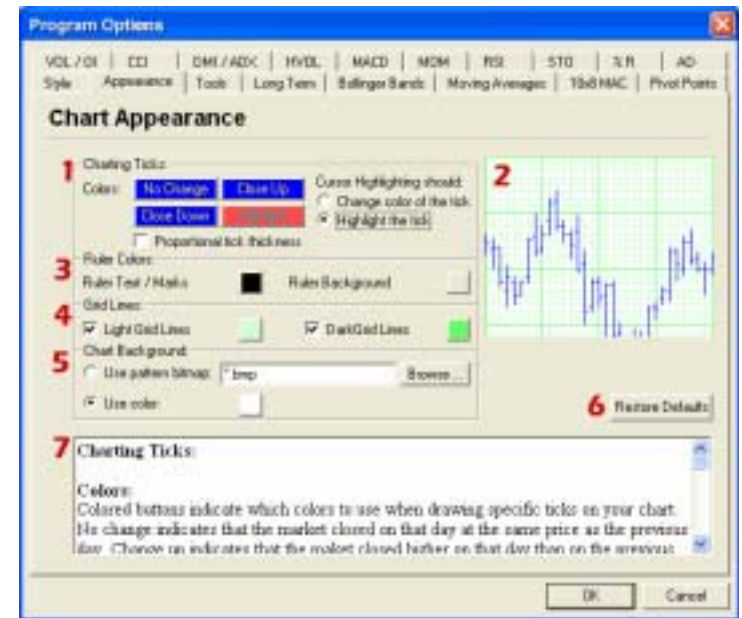


Chart 10: Appearance - Chart Tick Drawing Options

1. Charting Ticks:

- a. **Colors:** Colored buttons indicate which colors to use when drawing specific ticks on your chart.
- b. **Cursor Highlighting** should: Change Color of the tick: This causes the actual tick to change to the highlight color selected under the color selection.
- c. **Highlight the tick:** This causes a vertical background line highlight of the tick. Highlighting occurs while holding down the "shift" key and hovering your mouse cursor over the chart.
- d. **Proportional tick thickness:** Causes ticks to be drawn with thicker pens, so they appear to be thicker and easier to see when enlarged. It is important to have this option selected when printing charts, otherwise

ticks will appear very thin. A shortcut to turn the thick ticks off and on is by right clicking on the chart window and selecting the Proportional Ticks item.

2. **Preview Window:** When changing properties, you may view the changes in the Preview Window before applying them to an active commodity Book.
3. **Ruler Colors:**
 - a. Ruler Text / Marks: Indicates the color used for the ruler lines and text.
 - b. Ruler Background: Indicates the color used for the background of the rulers.
4. **Grid Lines:** The check boxes indicate whether or not we display those particular grid lines, and the color boxes indicate which colors we display those grids with.
5. **Chart Background:** Your chart can be displayed with a solid color background, or you can choose to use a bitmap image as your background. If you use a bitmap, the image will be tiled. An example would be a small 1"x1" square graphic, possibly resembling a different grade or style of paper.
6. To set the options back to factory defaults, click on the **Restore Defaults** button on the bottom of the Properties screen.
7. Notice the **documentation** section at the end of the page. This section includes instruction for each option page.

Tools: Tool Default Options

The Tools section allows the user to change tool default color options, line thickness, font properties and more. View the detailed items after the screenshot for more information.

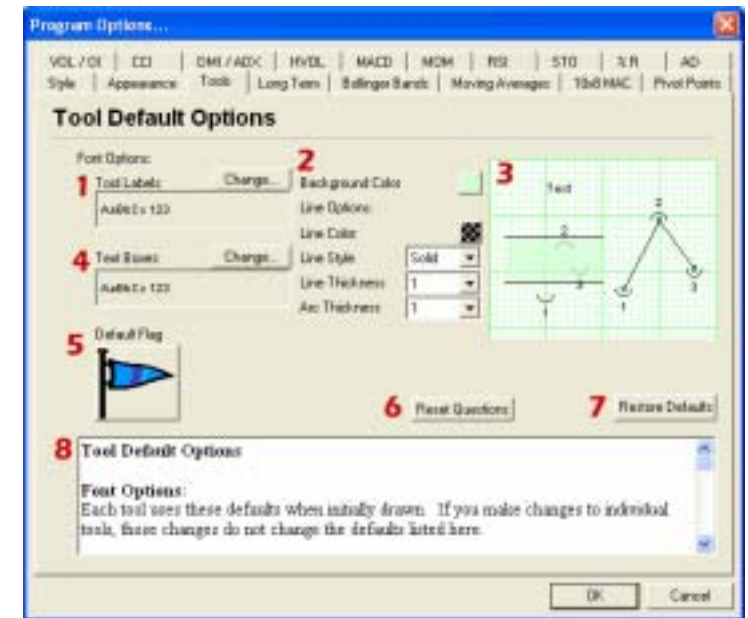


Chart 11: Tools - Tool Default Options

1. **Font Options:** Each tool uses these defaults when initially drawn. If you make changes to individual tools, those changes do not change the defaults listed here.
 - a. Tool labels: This is the default type, size and color of the text used as labels with each tool.
2. **Background Color:** Default color used for backgrounds of tools that have background capabilities.
 - Line Options:**
 - a. Line Color: Default line color used by tools.
 - b. Line Style: Default line style, this effects how tool lines appear.
 - c. Line Thickness: Default line thickness, this affects how thick lines on tools appear.
 - d. Arc Thickness: This is the default for how thick the arcs are drawn for tools that use

arcs. Arcs are always drawn in the same color as lines.

- 3. Preview Window:** When changing properties, you may view the changes in the Preview Window before applying them to an active commodity Book.
- 4. Text Boxes:** This is the default type, size and color of the text used for the text tool.
- 5. Default Flag:** The graphic selected here is used for the default flag on the flag tool. To select a new flag click on the default flag button.
- 6. Reset Questions:** Reset all of the question boxes so the ones you checked to not ask you again will appear.
- 7.** To set the options back to factory defaults, click on the **Restore Defaults** button on the bottom of the Properties screen.
- 8.** Notice the **documentation** section at the end of the page. This section includes instruction for each option page.

Long Term: Long Term Chart Options:

The Long Term section allows the user to define how long term charts are calculated. View the detailed items after the screenshot for more information.

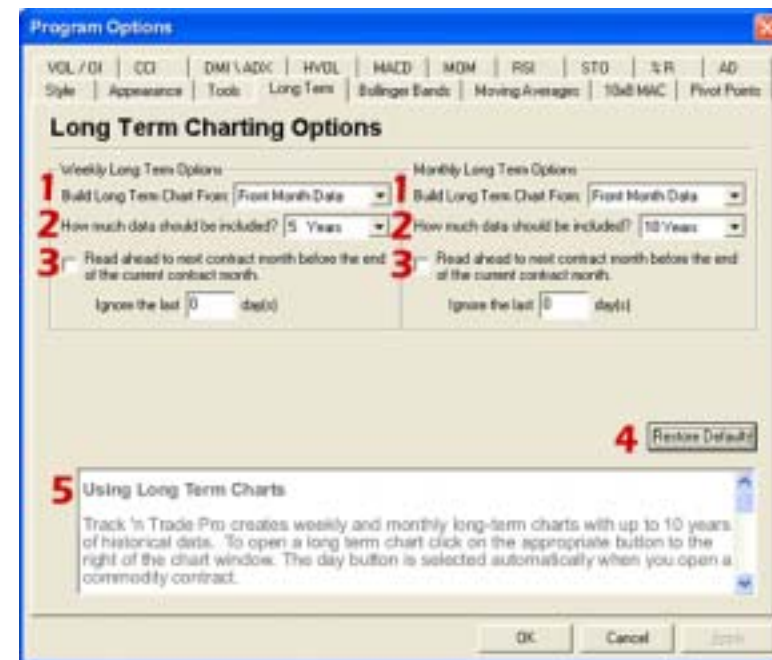


Chart 12: Long Term Chart Options

Available Options:

The following options are available for both the Weekly and Monthly Long Term Charts.

1. Build Long Term Charts From:

- 1. Front Month Data:** This option uses data from one contract month to the next in historical order. For example: Jan 2001, Mar 2001, May 2001 and so on.
- 2. Contract Month Data:** This option uses data from a contract month from each successive year. For example: Jan 2001, Jan 2002, Jan 2003 and so on.

- 2. How much data should be included?:** 2-10 years of data can be displayed at a time on a long term chart. Click on the drop down menu to specify the # of years to be displayed.

- To cut off the end of the contract used in your long term chart, click on the empty check box in front of the text: **"Read ahead to next contract month before the end of the current contract month."** Next, specify the number of days in the box that you would like to exclude.
- To set the options back to factory defaults, click on the **Restore Defaults** button on the bottom of the Properties screen.
- Notice the **documentation** section at the end of the page. This section includes instructions for each option page.

Note: After applying the new settings in the Options Panel, if you currently have a long term open, you will need to delete the long-term chart from the Active Charts list and then recreate the chart to apply the new settings to the chart.

Bollinger Bands:

The Bollinger Band section allows the user to change indicator properties default color options, line thickness, and more. View the detailed items after the screenshot for more information.

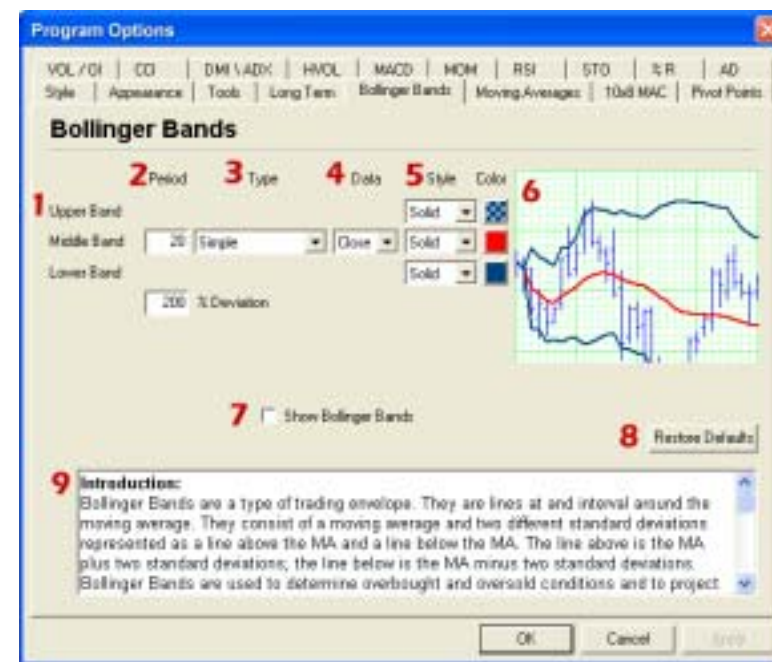


Chart 13: Bollinger Band Options

- Bands:** The Bollinger Band Indicator is made up of three lines on the chart. They are defined in options as Upper, Middle and Lower Bands.
- Period:** Define the period interval for the Bollinger Band. This value effects all three lines.
- Type:** The Bollinger Band Indicator can be based on a Simple, Linearly Weighted or Exponentially Smoothed Average. Click on the drop down menu to change the type of average.
- Data:** The average can be based on four values: Open, High, Low or Close. Click on the drop down menu to change the data the average is based on.
- Style & Color:** Bollinger Band lines can be displayed as solid, dashed, or dotted lines. Click on the drop down menu to specify the type of line style. Also, next to the drop down menu is the color for the

line. Click on the color box and a color panel will open for you to specify the new color.

6. **Preview Window:** This Window allows you to make changes and preview them before saving them.
7. **Show Bollinger Bands:** To show the Bollinger Band on the chart, click in the check box. You may also select this indicator by using the right-click menu for the Chart Window.
8. **Restore Defaults:** To restore the Bollinger Band Indicator to the Default Options, click the Restore Defaults button.
9. **Documentation:** This box contains instructions for the Bollinger Band Indicator.

Moving Average - Moving Average Lines

The Moving Average section allows the user to change indicator properties default color options, line thickness, and more. View the detailed items after the screenshot for more information.

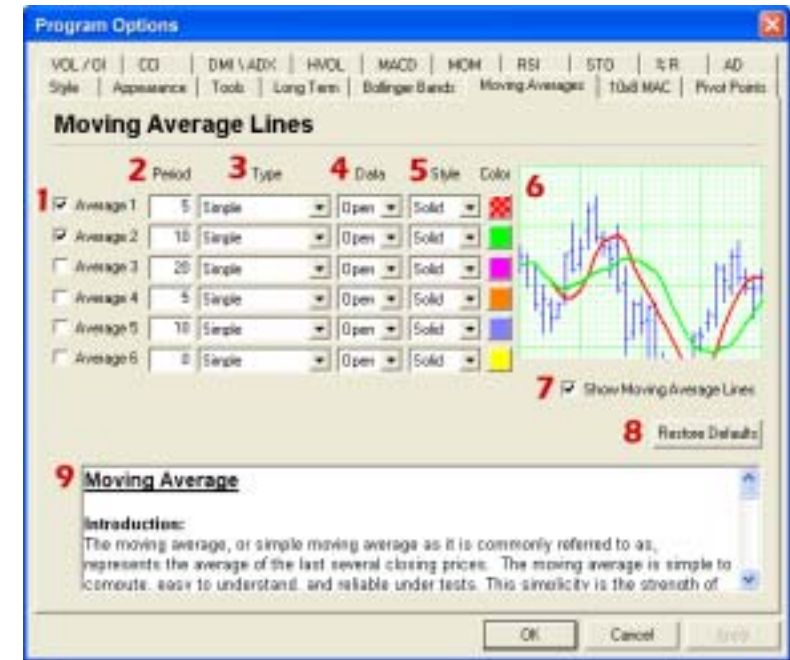


Chart 14: Moving Average Line Options

1. **Average1-6:** Each Moving average displayed on the chart is referred to as an Average. You may have up to 6 different averages displayed at once on the screen.
2. **Period:** To specify the number of days used in calculating the moving average simply click on the box, highlight the current number and type in a new value. Be sure to click on Ok to save your changes.
3. **Type:** Track 'n Trade Pro enables users to choose from simple, linearly weighted and exponentially smoothed moving averages. Click on the drop down menu to specify the type.
4. **Data:** The average can be based on four values: Open, High, Low or Close. Click on the drop down menu to change the data the average is based on.

5. **Style & Color:** Average lines can be displayed as solid, dashed, or dotted lines. Click on the drop down menu to specify the type of line style. Also, next to the drop down menu is the color for the line. Click on the color box and a color panel will open for you to specify the new color.
6. **Preview Window:** This Window allows you to make changes and preview them before saving them.
7. **Show Moving Average Lines:** To show the Moving Average Lines on the chart, click in the check box. You may also select the indicator by using the shortcut buttons below the control panel, or by right clicking in the Indicator Window.
8. **Restore Defaults:** To restore Moving Average Options to the factory defaults, click this button.
9. **Documentation:** This box contains instructions for the Moving Average Indicator.

10x8 MAC

The 10x8 MAC section allows the user to change indicator properties default color options, line thickness, and more. View the detailed items after the screenshot for more information.

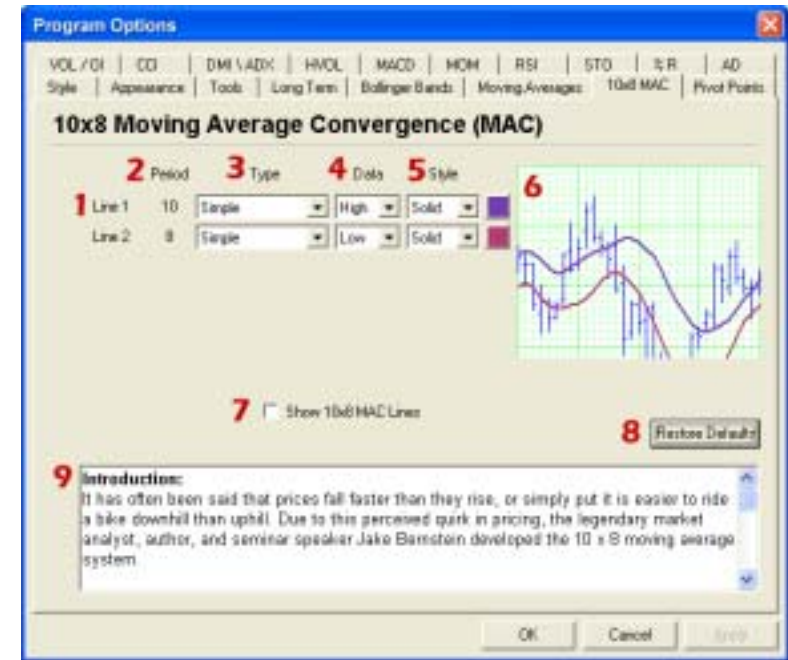


Chart 15: 10X8 MAC

1. **Lines:** The 10x8 MAC consists of two lines. Each line's parameters may be changed independently in the options screen. To set the indicator back to the default settings click on Restore Defaults.
2. **Period:** The period values of the 10x8 MAC are not editable. If you would like to specify different time periods for an average, it is recommended that you use a moving average instead of the 10x8 MAC.
3. **Type:** Choose between Simple, Linearly Weighted, and Exponentially Smoothed averages for each line. Click on the drop down menu and select the type desired.
4. **Data:** To change the data that the line is based on click on the drop down menu. The options available are: High, Low, Open, and Close.

5. **Style & Color:** Average lines can be displayed as solid, dashed, or dotted lines. Click on the drop down menu to specify the type of line style. Also, next to the drop down menu is the color for the line. Click on the color box and a color panel will open for you to specify the new color.
6. **Preview Window:** Use the Preview Window to view changes before they are applied to the Track 'n Trade Pro Chart.
7. **Show 10x8 MAC Lines:** To view the 10x8 MAC on the chart window click in the check box. You may also select the indicator from the shortcut buttons and the right-click menu of the indicator window.
8. **Restore Defaults:** To restore the 10x8 MAC to the original setting click on the Restore Defaults button.
9. **Documentation:** Instructions and definitions for the 10x8 MAC are available in the options screen.

Pivot Points

The Pivot Points section allows the user to change indicator properties, default color options, line thickness, and more. View the detailed items after the screenshot for more information.

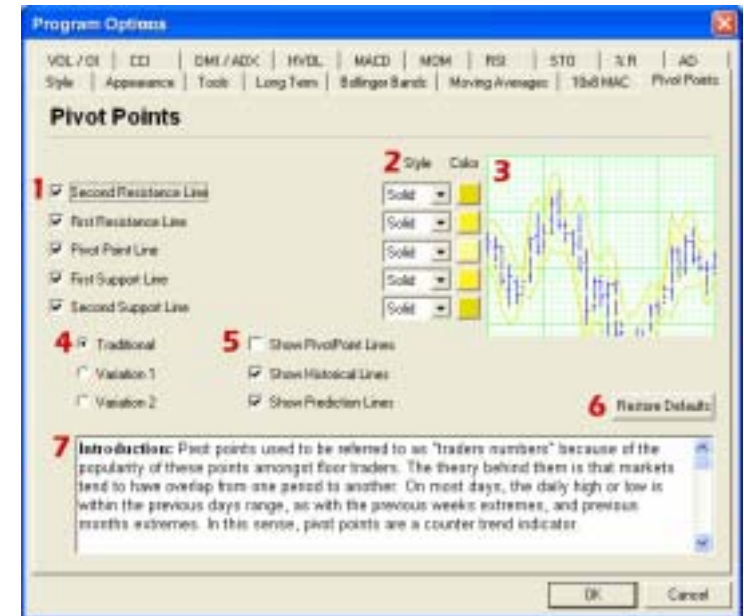


Chart 16: Pivot Points Options

1. **Pivot Point Lines:** Pivot Points are made up of 5 Lines. In the Program Options window you can specify preferences for each line independently. For information on their value and how they are calculated, refer to the article above.
2. **Style & Color:** The Pivot Point Indicator lines can be displayed as a solid, dashed, or dotted. Click on the drop down menu to specify the type of line style desired. Next to the style drop down menu is the color box. To change the line color click on the color box, this will open a color panel for you to choose a new color.
3. **Preview Window:** This Window allows you to make changes and preview them before saving them.
4. Pivot Points are available in **Traditional**, **Variation 1**, and **Variation 2**. Click on the different radio

buttons to change between the three methods. For more information on the different methods, see the article above.

5. **Show Pivot Point Lines:** To display Pivot Point Lines in the chart window, click the check box. You may also select Pivot Points from the right-click menu for the Chart Window. Also, to see historical and predication lines, select the box with that option.
6. **Restore Defaults:** To restore Pivot Points to Default Settings, click on the Restore Defaults button.
7. **Documentation:** This section contains instructions on using Pivot Points.

AD - Williams' AD

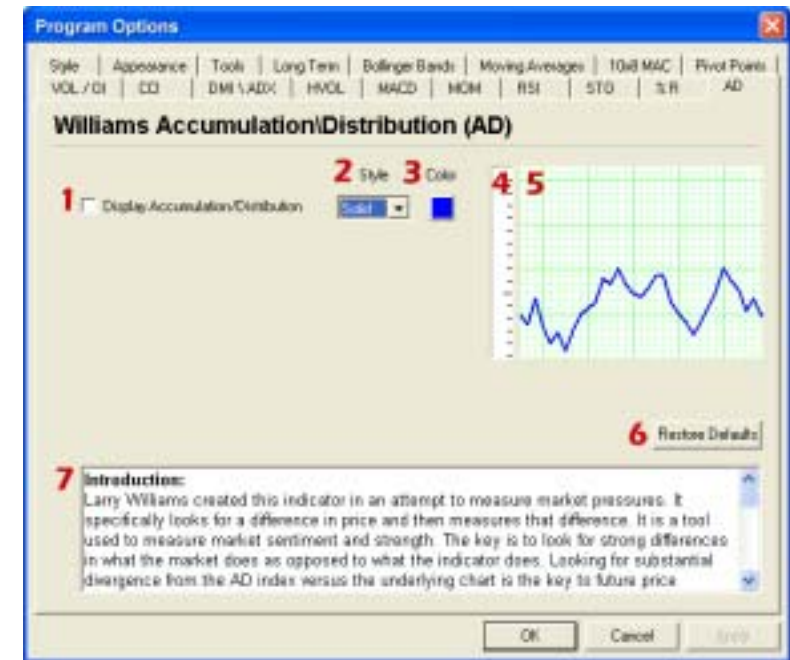
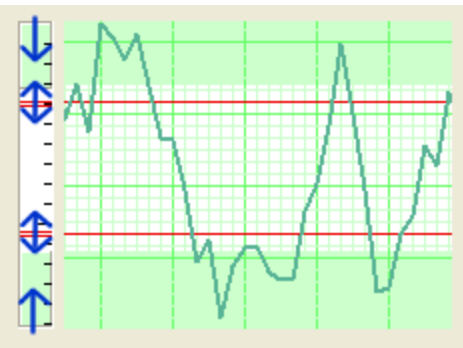


Chart 17: Williams' AD Options

1. **Display Accumulation/Distribution:** To display the indicator in the chart window, click the check box. You may also select the Williams' AD Indicator from the shortcut buttons or the right-click menu in the Indicator Window.
2. **Style:** The Williams' AD Indicator line can be displayed as a solid, dashed, or dotted line. Click on the drop down menu to specify the type of line style desired.
3. **Color:** Click on the color box and a color panel will open for you to specify the new color.
4. **Ruler Bar:** The Ruler Bar allows user's to create highlighted regions or horizontal lines within the indicator window. To create a highlighted region, click at either end of the Ruler bar and drag either up or down to the end point of the region. To place a line, click in side the ruler bar and drag the line to the desired point.



Ruler Bar

5. **Preview Window:** This Window allows you to make changes and preview them before saving them.
6. **Restore Defaults:** To bring the Williams' AD Indicator to the Default Settings, click on the Restore Defaults button.
7. **Documentation:** This section contains instructions on using the Williams' AD Indicator.

%R - Williams Percent R

The %R section allows the user to change indicator properties, default color options, line thickness, and more. View the detailed items after the screenshot for more information.

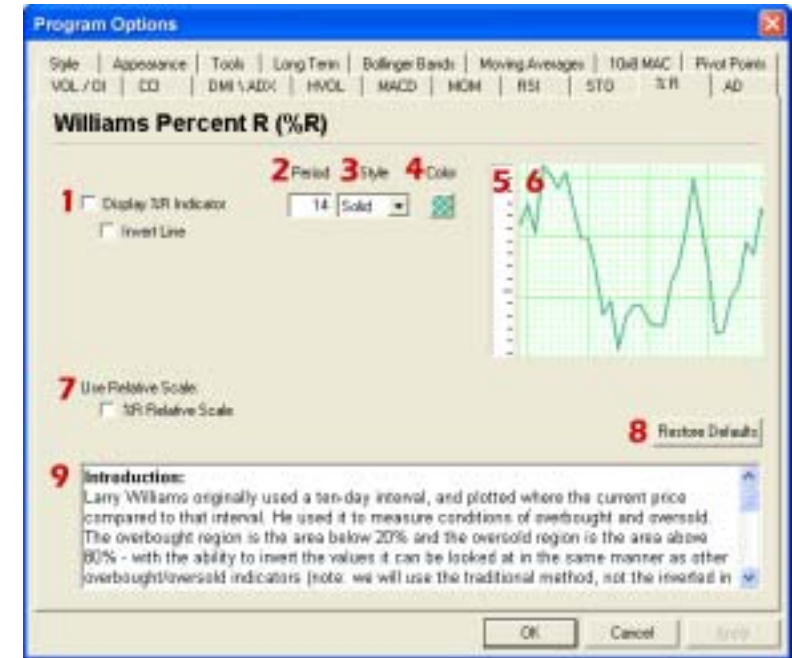
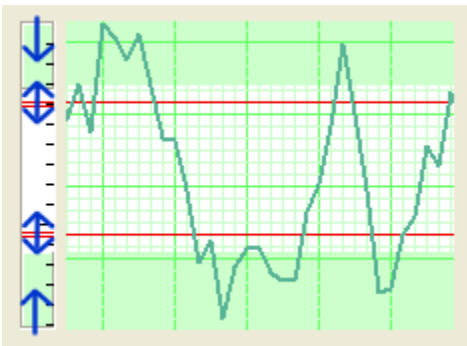


Chart 18: Williams Percent R Options

1. **Display %R Indicator:** To display the indicator in the chart window, click the check box. You may also select the %R Indicator from the shortcut buttons or the right-click menu in the Indicator Window. To invert the William's %R Indicator, check the click box in front of the text, **Invert Line**.
2. **Period:** To specify the number of days used in calculating the %R simply click on the box, highlight the current number and type in a new value. Be sure to click on Ok to save your changes.
3. **Style:** The %R line can be displayed as a solid, dashed, or dotted line. Click on the drop down menu to specify the type of line style desired.
4. **Color:** Click on the color box and a color panel will open for you to specify the new color.

- Ruler Bar:** The Ruler Bar allows user's to create highlighted regions or horizontal lines within the indicator window. To create a highlighted region, click at either end of the Ruler bar and drag either up or down to the end point of the region. To place a line, click inside the ruler bar and drag the line to the desired point. See screen shot below:



Ruler Bar

- Preview Window:** This Window allows you to make changes and preview them before saving them.
- Use Relative Scale:** When choosing this option, the 100% location is changed to the highest point value of the Williams' % R Indicator.
- Restore Defaults:** To bring the %R Indicator to the Default Settings, click on the Restore Defaults button.
- Documentation:** This section contains instructions on using the %R Indicator.

STO – Stochastics

The STO section allows the user to change indicator properties default color options, line thickness, and more. View the detailed items after the screenshot for more information.

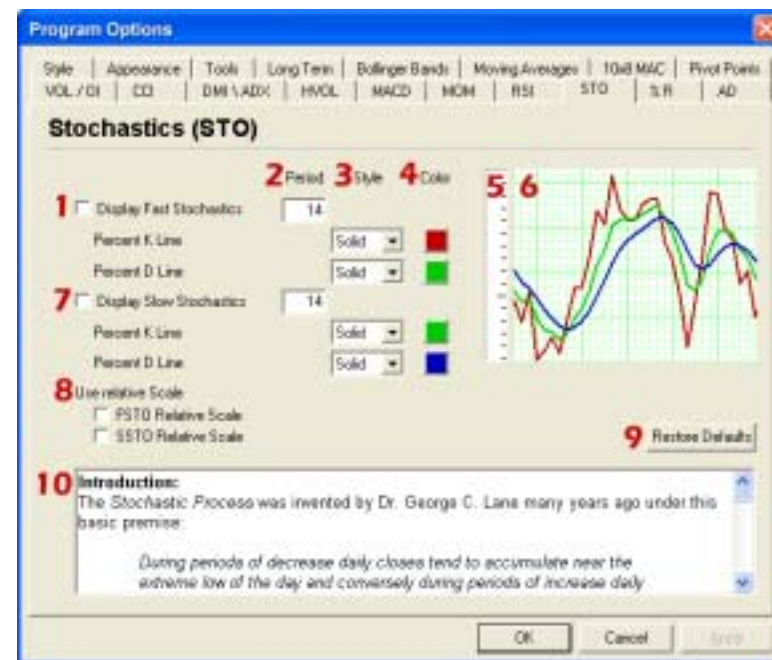
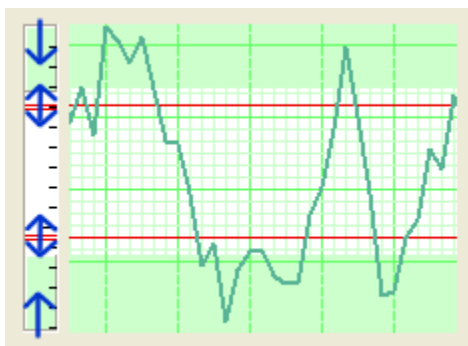


Chart 19: Stochastics Options

- Display Fast Stochastics:** To display the indicator in the chart window, click the check box. You may also select the Fast Stochastics Indicator from the shortcut buttons or the right-click menu in the Indicator Window.
- Period:** To specify the number of days used in calculating the Stochastics Indicator simply click on the box, highlight the current number and type in a new value. Be sure to click on OK to save your changes.
- Style:** The Fast Stochastics Indicator lines can be displayed as a solid, dashed, or dotted. Click on the drop down menu to specify the type of line style desired.
- Color:** This box displays the color of the specified line. To change the line color, click on the color box

and a color panel will open for you to specify a new color.

- Ruler Bar:** The Ruler Bar allows user's to create highlighted regions or horizontal lines within the indicator window. To create a highlighted region, click at either end of the Ruler bar and drag either up or down to the end point of the region. To place a line, click in side the ruler bar and drag the line to the desired point. See screen shot below:



Ruler Bar

- Preview Window:** This Window allows you to make changes and preview them before saving them.
- Display Slow Stochastics:** To display the indicator in the chart window, click the check box. You may also select the Slow Stochastics Indicator from the shortcut buttons or the right-click menu in the Indicator Window.
- Use Relative Scale:** When choosing this option, the 100% location is changed to the highest point value of the Indicator.
- Restore Defaults:** To bring the Indicator to the Default Settings, click on the Restore Defaults button.
- Documentation:** This section contains instructions on using the Stochastics Indicator.

RSI – Relative Strength Index

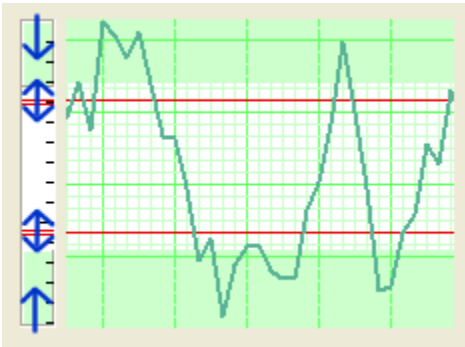
The RSI section allows the user to change indicator properties, default color options, line thickness, and more. View the detailed items after the screenshot for more information.



Chart 20: Relative Strength Index Options

- Display RSI Indicator:** To display the indicator in the chart window, click the check box. You may also select the RSI Indicator from the shortcut buttons or the right-click menu in the Indicator Window. To invert the RSI Indicator, check the click box in front of the text, **Invert Line**.
- Period:** To specify the number of days used in calculating the RSI simply click on the box, highlight the current number and type in a new value. Be sure to click on Ok to save your changes.
- Style & Color:** The RSI line can be displayed as a solid, dashed, or dotted line. Click on the drop down menu to specify the type of line style desired. Next to the drop down menu is a color box, click on this box to change the color of the line.
- Ruler Bar:** The Ruler Bar allows user's to create highlighted regions or horizontal lines within the indicator window. To create a highlighted region,

click at either end of the Ruler bar and drag either up or down to the end point of the region. To place a line, click inside the ruler bar and drag the line to the desired point. See screen shot below:



Ruler Bar

5. **Preview Window:** This Window allows you to make changes and preview them before saving them.
6. **Average Calculation:** Choose between Exponential, Simple, and Wilder's smoothing calculations for the RSI indicator.
7. **Use Relative Scale:** In using the Relative scale with the RSI Indicator you are taking the highest value and assigning to 100%.
8. **Restore Defaults:** To bring the RSI Indicator to the Default Settings, click on the Restore Defaults button.
9. **Documentation:** This section contains instructions on using the RSI Indicator.

MOM – Momentum

The MOM section allows the user to change indicator properties, default color options, line thickness, and more. View the detailed items after the screenshot for more information.

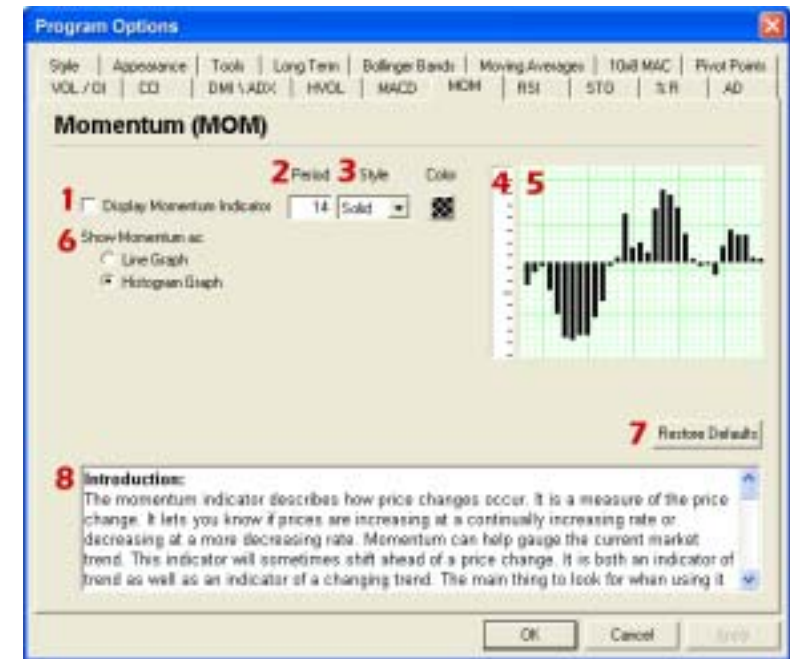
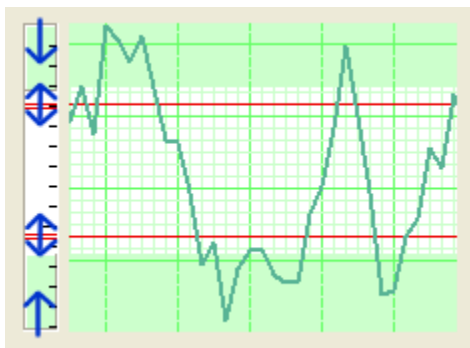


Chart 21: Momentum Options

1. **Display Momentum Indicator:** To display the indicator in the chart window, click the check box. You may also select the Momentum Indicator from the shortcut buttons or the right-click menu in the Indicator Window.
2. **Period:** To specify the number of days used in calculating the Momentum Indicator, simply click on the box, highlight the current number and type in a new value. Be sure to click on Ok to save your changes.
3. **Style & Color:** The Momentum Indicator Line (when displayed as a Line Graph) can be displayed as a solid, dashed, or dotted line. Click on the drop down menu to specify the type of line style desired. Next to the drop down menu is a color box, click on this box to change the color of the line.

4. **Ruler Bar:** The Ruler Bar allows user's to create highlighted regions or horizontal lines within the indicator window. To create a highlighted region, click at either end of the Ruler bar and drag either up or down to the end point of the region. To place a line, click inside the ruler bar and drag the line to the desired point. See screen shot below:



Ruler Bar

5. **Preview Window:** This Window allows you to make changes and preview them before saving them.
6. **Show Momentum As:**
 - a. Histogram Graph: Momentum represented as a Time Progression Bar Chart.
 - b. Line Graph: Momentum represented as Lines.
7. **Restore Defaults:** To restore the Momentum Indicator to Default Settings, click on the Restore Defaults button.
8. **Documentation:** This section contains instructions on using the Momentum Indicator.

MACD - Moving Average Convergence/Divergence

The MACD section allows the user to change indicator properties default color options, line thickness, and more. View the detailed items after the screenshot for more information.

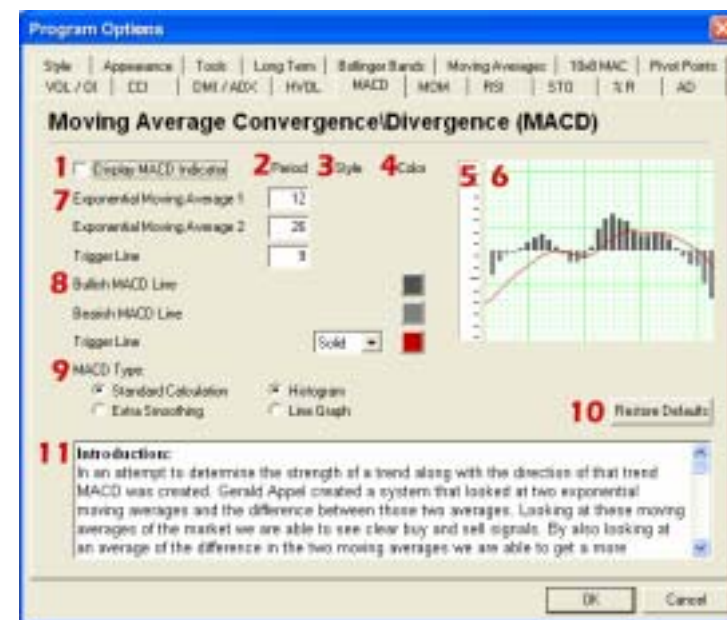
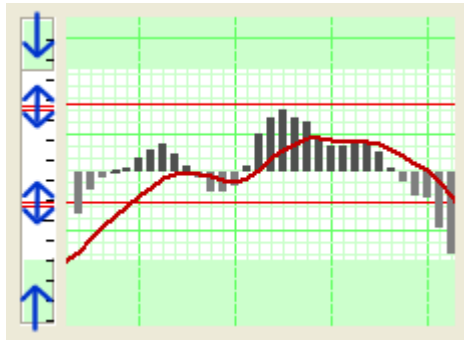


Chart 22: MACD Options

1. **Display MACD Indicator:** To display the indicator in the chart window, click the check box. You may also select the MACD Indicator from the shortcut buttons or the right-click menu in the Indicator Window.
2. **Period:** To specify the number of days used in calculating the MACD simply click on the box, highlight the current number and type in a new value. Be sure to click on Ok to save your changes.
3. **Style:** MACD lines can be displayed as solid, dashed, or dotted lines. Click on the drop down menu to specify the type of line style.
4. **Color:** Click on the color box and a color panel will open for you to specify the new color.
5. **Ruler Bar:** The Ruler Bar allows user's to create highlighted regions or horizontal lines within the indicator window. To create a highlighted region, click at either end of the ruler bar and drag either up or down to the

end point of the region. To place a line, click inside the ruler bar and drag the line to the desired point. (When dragging a line-highlighted region, a numerical value is displayed until you release the mouse.) See screen shot below:



Ruler Bar

6. **Preview Window:** This Window allows you to make changes and preview them before saving them.
7. **Exponential Moving Average 1&2:** The MACD is calculated using two exponential moving averages. To change the periods used in the formula, highlight the number value and type in the new value desired.
8. **MACD Lines:** The MACD is made up of 3 lines, the Bearish, the Bullish and the Trigger Line. Each of these lines can specify the color and style. Click on the style drop down menu and select the desired type. To change the color of the line click on the color box and select the new color.
9. **MACD Type:** Choose from two types of MACD Indicators.
 - a. Standard Calculation
 - b. Extra Smoothed: This Calculation is a proprietary formula developed by Lan H. Turner, president and founder of Gecko Software, Inc., and Gecko Software's Programming staff. This method increases the movement in the MACD Indicator and has shown to be more accurate (in Gecko Software's market testing) than the standard calculation. Click the Extra Smoothed option to test it's accuracy for yourself! Its relationship to the MACD is similar to the relationship between the Fast and Slow Stochastics - so think of this indicator as the "Fast MACD".

- c. Histogram: displays as histogram.
 - d. Line Graph: displays as line graph.
10. **Restore Defaults:** To bring the MACD Indicator to the Default Settings, click on the Restore Defaults button.
 11. **Documentation:** This section contains instructions on using the MACD Indicator.

HVOL - Historic Volatility

The HVOL section allows the user to change indicator properties, default color options, line thickness, and more. View the detailed items after the screenshot for more information.

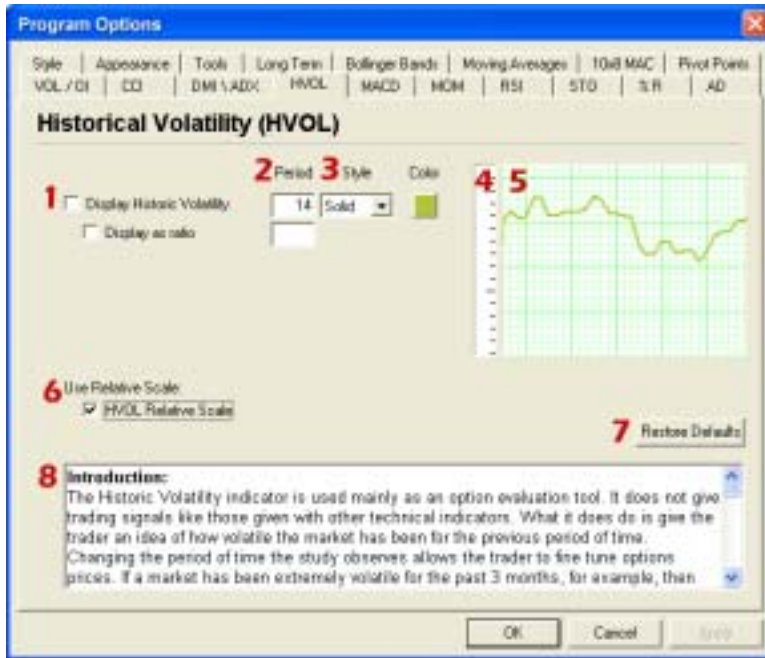
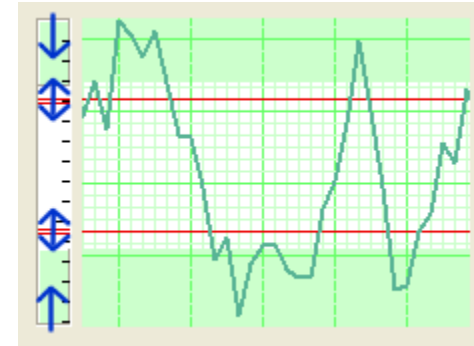


Chart 23: Historic Volatility Options

1. **Display Historic Volatility:** To display the indicator in the chart window, click the check box. You may also select the Historic Volatility from the shortcut buttons or the right-click menu in the Indicator Window.
2. **Period:** To specify the number of days used in calculating Historic Volatility, simply click on the box, highlight the current number and type in a new value. Be sure to click on Ok to save your changes.
3. **Style & Color:** The Historic Volatility Line can be displayed as a solid, dashed, or dotted line. Click on the drop down menu to specify the type of line style desired. Next to the drop down menu is a color box, click on this box to change the color of the line.

4. **Ruler Bar:** The Ruler Bar allows user's to create highlighted regions or horizontal lines within the indicator window. To create a highlighted region, click at either end of the Ruler bar and drag either up or down to the end point of the region. To place a line, click in side the ruler bar and drag the line to the desired point. See screen shot below:



Ruler Bar

5. **Preview Window:** This Window allows you to make changes and preview them before saving them.
6. **Use Relative Scale:** When choosing this option, the 100% location is changed to the highest point value in Historic Volatility.
7. **Restore Defaults:** To restore Historic Volatility to Default Settings, click on the Restore Defaults button.
8. **Documentation:** This section contains instructions on using Historic Volatility.

DMI – Directional Movement Index

The DMI section allows the user to change indicator properties, default color options, line thickness, and more. View the detailed items after the screenshot for more information.

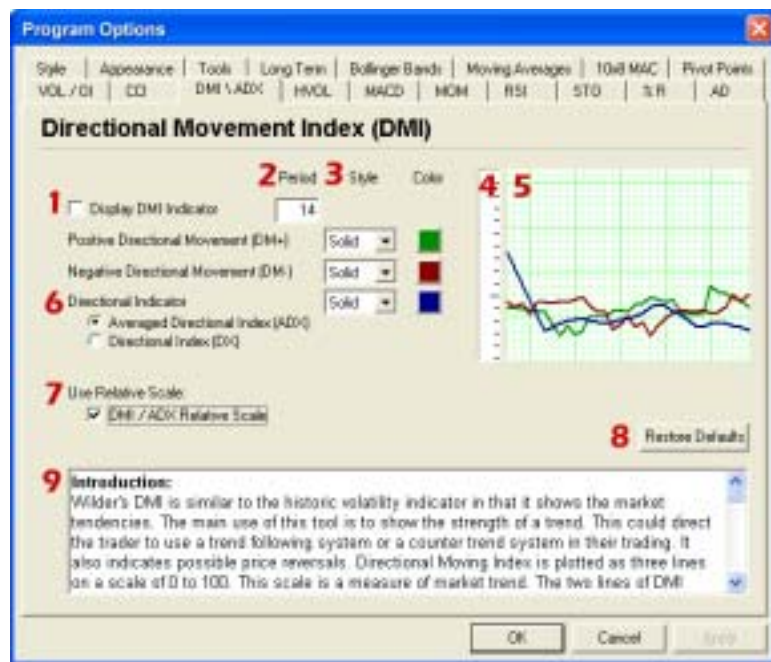
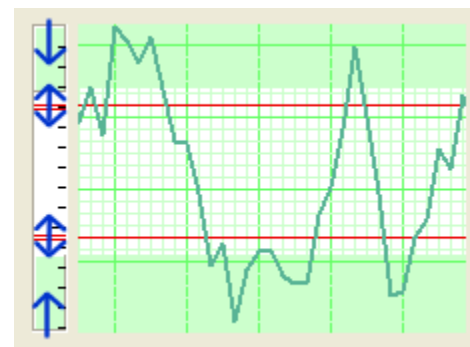


Chart 24: Directional Movement Index Options

1. **Display DMI Indicator:** To display the indicator in the chart window, click the check box. You may also select the DMI from the shortcut buttons or the right-click menu in the Indicator Window.
2. **Period:** To specify the number of days used in calculating DMI, simply click on the box, highlight the current number and type in a new value. Be sure to click on Ok to save your changes.
3. **Style & Color:** The DMI Lines can be displayed as a solid, dashed, or dotted. Click on the drop down menu to specify the type of line style desired. Next to the drop down menu is a color box, click on this box to change the color of the line.
4. **Ruler Bar:** The Ruler Bar allows user's to create highlighted regions or horizontal lines within the indicator window. To create a highlighted region, click at either end of the Ruler bar and drag either up

or down to the end point of the region. To place a line, click in side the ruler bar and drag the line to the desired point. See screen shot below:



Ruler Bar

5. **Preview Window:** This Window allows you to make changes and preview them before saving them.
6. **Directional Indicator:** The two methods available in displaying the DMI Indicator are Averaged Directional Index (ADX) and the Directional Index (DX). Click on the radio button in front of the method to select. For more information on the different values, refer to the article above.
7. **Use Relative Scale:** When choosing this option, the 100% location is changed to the highest point value in the DMI Indicator.
8. **Restore Defaults:** To restore the DMI Indicator to Default Settings, click on the Restore Defaults button.
9. **Documentation:** This section contains instructions on using DMI Indicator.

CCI - Commodity Channel Index

The CCI section allows the user to change indicator properties, default color options, line thickness, and more. View the detailed items after the screenshot for more information.

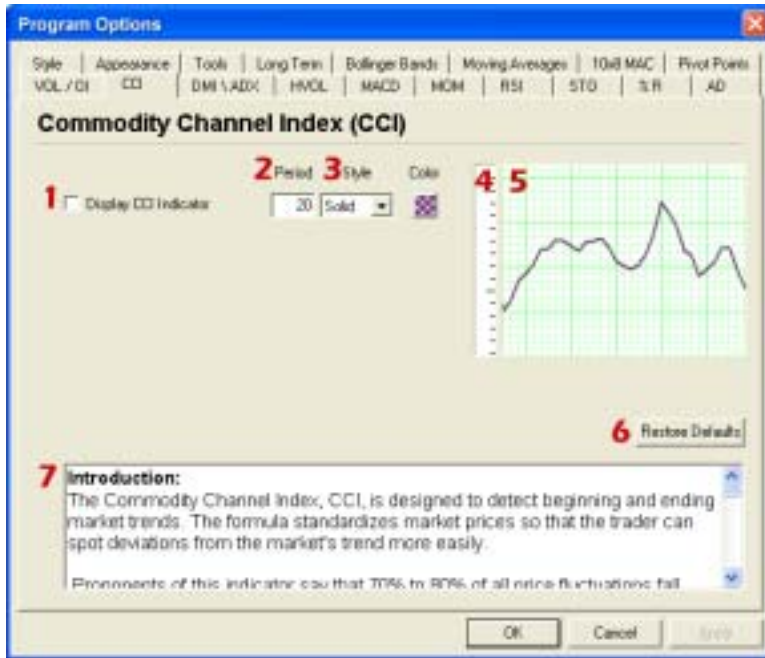
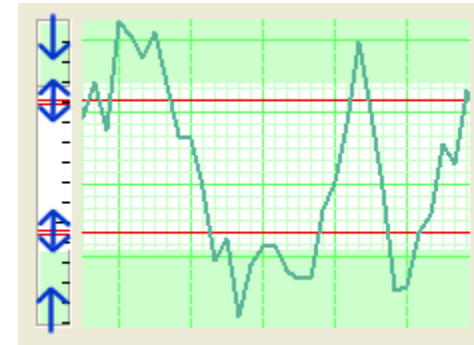


Chart 25: Commodity Channel Index Options

1. **Display CCI Indicator:** To display the indicator in the chart window, click the check box. You may also select the CCI from the shortcut buttons or the right-click menu in the Indicator Window.
2. **Period:** To specify the number of days used in calculating CCI, simply click on the box, highlight the current number and type in a new value. Be sure to click on Ok to save your changes.
3. **Style & Color:** The CCI Line can be displayed as a solid, dashed, or dotted. Click on the drop down menu to specify the type of line style desired. Next to the drop down menu is a color box, click on this box to change the color of the line.
4. **Ruler Bar:** The Ruler Bar allows user's to create highlighted regions or horizontal lines within the indicator window. To create a highlighted region,

click at either end of the Ruler bar and drag either up or down to the end point of the region. To place a line, click inside the ruler bar and drag the line to the desired point. See screen shot below:



Ruler Bar

5. **Preview Window:** This Window allows you to make changes and preview them before saving them.
6. **Restore Defaults:** To restore the CCI Indicator to Default Settings, click on the Restore Defaults button.
7. **Documentation:** This section contains instructions on using CCI Indicator.

VOL/OI - Volume/Open Interest

The VOL/OI section allows the user to change indicator properties, default color options, line thickness, and more. View the detailed items after the screenshot for more information.

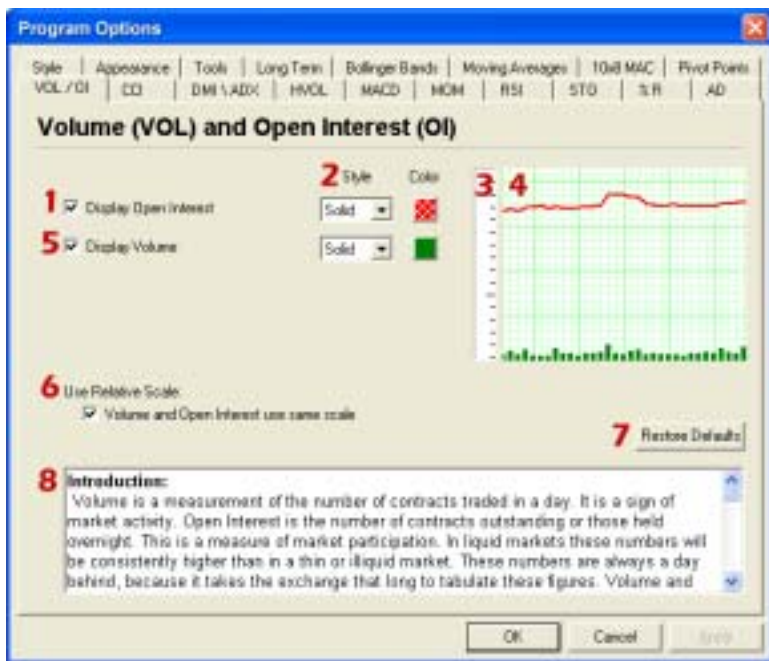
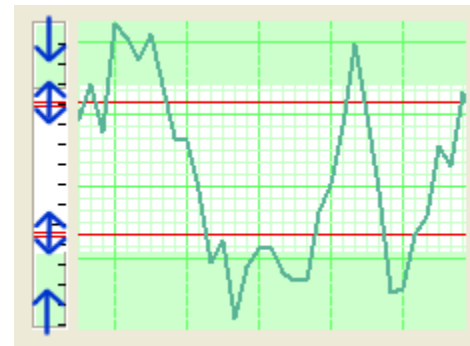


Chart 26: Volume/Open Interest Options

1. **Display Open Interest:** To display the indicator in the chart window, click the check box. You may also select Open Interest from the shortcut buttons or the right-click menu in the Indicator Window.
2. **Style & Color:** The Volume\Open Interest line can be displayed as a solid, dashed, or dotted. Click on the drop down menu to specify the type of line style desired. Next to the drop down menu is the color box, click on this box to open a panel and change the line color.

3. **Ruler Bar:** The Ruler Bar allows user's to create highlighted regions or horizontal lines within the indicator window. To create a highlighted region, click at either end of the Ruler bar and drag either up or down to the end point of the region. To place a line, click inside the ruler bar and drag the line to the desired point. See screen shot below:



Ruler Bar

4. **Preview Window:** This Window allows you to make changes and preview them before saving them.
5. **Display Volume:** To display the indicator in the chart window, click the check box. You may also select Volume from the shortcut buttons or the right-click menu in the Indicator Window.
6. **Use Relative Scale:** In using the same scale for both the Open Interest and Volume, it makes 100% equal the highest value in either Open Interest or Volume. If this option is unchecked, each indicator is displayed with their highest value being equal to 100%.
7. **Restore Defaults:** To restore Volume and Open Interest to Default Settings, click on the Restore Defaults button.
8. **Documentation:** This section contains instructions on using the Volume and Open Interest Indicators.